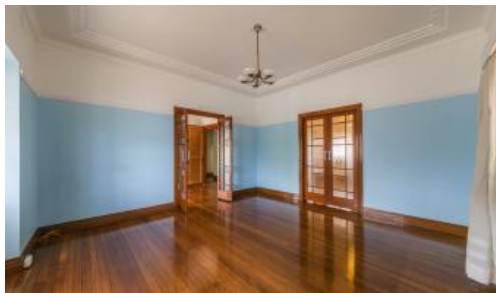


Sold



1 Jacaranda Ave, East Lismore



## "The Arches" - Funky Family Home - Handy to Everything

Located in the flood-free, highly popular suburb of East Lismore this wonderfully unique home is rich in highly desired original features. Art deco features woven amongst rich timber floors and doors, and gorgeous feature glass windows, create a home to treasure. Schools, hospital, sporting fields and more are all just an easy stroll from this fabulous location and, with a level block, this is definitely a property worth inspecting.

There's plenty of street appeal here courtesy of its high hedge and intriguing facade, including "The Arches", and the back yard offers a great spot to play in the shade on a hot summers day. Alternatively it could be a great site for a large shed if the existing garden shed is not enough for the extra large "toys" that so often accrue.

From the moment you enter the elegant foyer you know you

 3  1  2  558 m<sup>2</sup>

**Price** SOLD for \$355,000

**Property Type** Residential

**Property ID** 1013

**Land Area** 558 m<sup>2</sup>

### Agent Details

Melanie Stewart - 0421560936

### Office Details

Alstonville

2 Willie Wagtail Pl Alstonville, NSW, 2477 Australia

02 66281100





are onto something special. Spacious bedrooms and a sleepout offer a range of layout options to suit the needs of the new occupants and reverse-cycle air-conditioning adds climate convenience to the charm. Further features include solar hot water, gas stove, remote controlled garage door and a carport.

Secure this special home for your property portfolio by contacting exclusive selling agent Robyn Hunt on 0448 448 758 and arranging your inspection today.

The above information provided has been furnished to us by the vendor/s. We have not verified whether or not that information is accurate and do not have any belief in one way or the other in its accuracy. We do not accept any responsibility to any person for its accuracy and do no more than pass it on. All interested parties should make and rely upon their own inquiries in order to determine whether or not this information is in fact accurate.